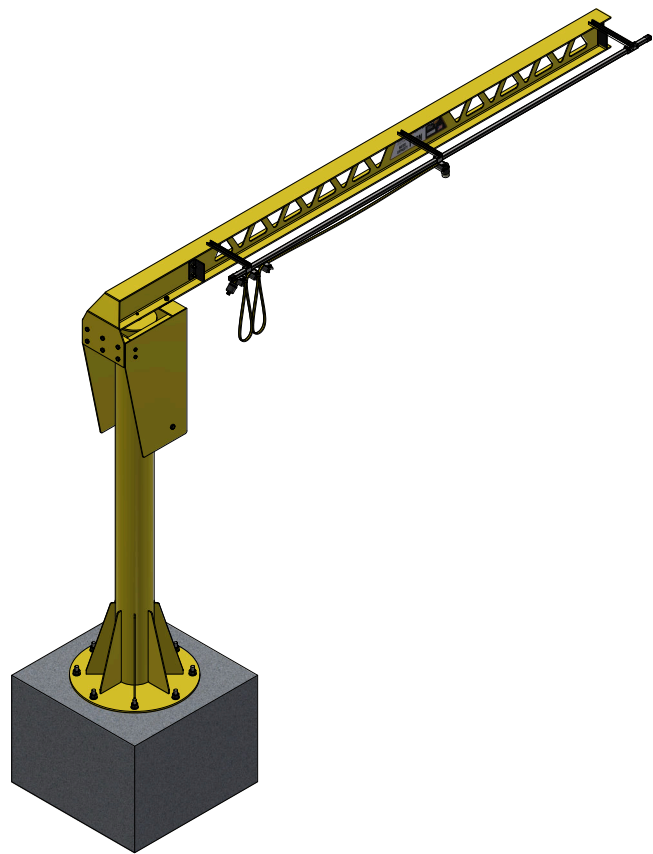
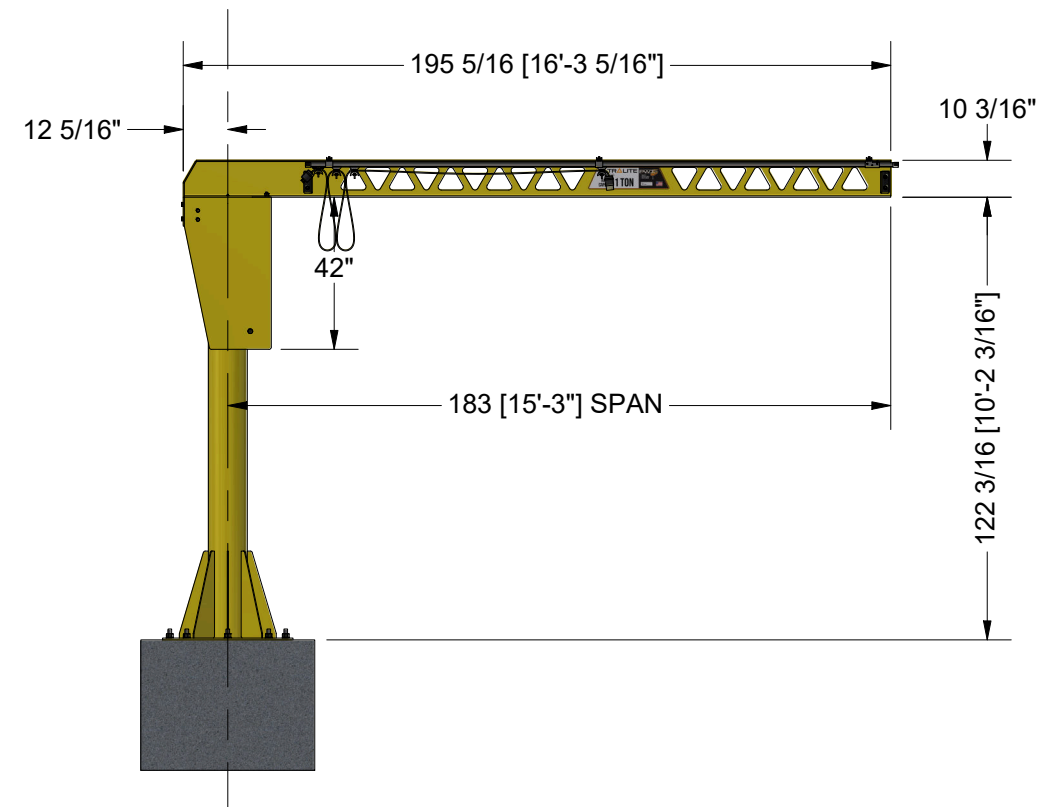
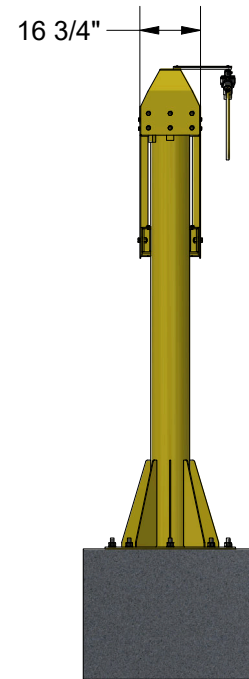
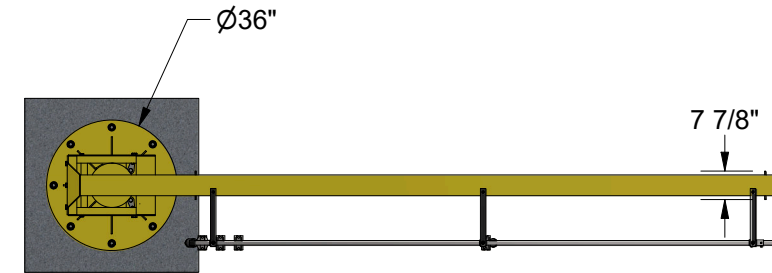


Y:\Engineering\09 Engineering Staff\Jonathan McGurn\Sample Hoist Zone Approval\Ultralite Base Plate Mounted Jib Crane\Free Standing Jib Crane with Base Plate - Structured.dwg
 Last Saved: 03-06-2025 @ 11:49:25 JOHN MCGUR



Qty. (1) Base Plate Mounted Jib Crane
 Capacity: 1/2 Ton
 Height Under Boom: 8'-6 1/2"
 Span: 15'



SUBMITTAL REVIEW
 CUSTOMER IS RESPONSIBLE TO VERIFY ALL DIMENSIONS.
 SIGNED APPROVAL AUTHORIZES PWI TO PROCEED WITH
 SHOP FABRICATION AND INSTALLATION.

SHIPS WEEK OF _____ IF APPROVED BY _____

SIGN ABOVE FOR APPROVAL _____ DATE _____


JOB:
 HOIST ZONE CUSTOMER
 SAMPLE APPROVAL DRAWING
 QUOTE

DRAWING:
 JIB ASSEMBLY
 QUOTE-JC-AS01

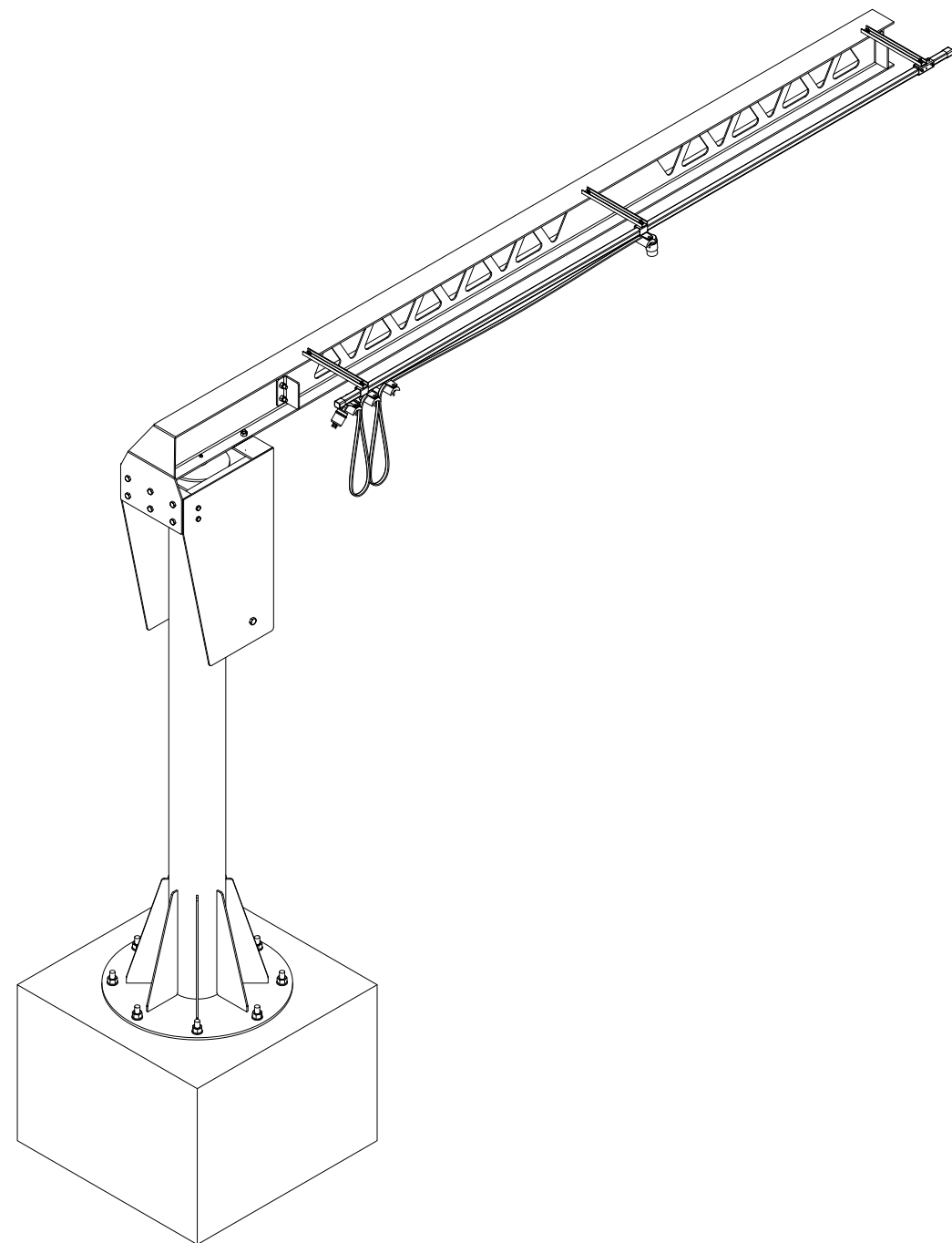
PAINT COLOR:
 YELLOW, SAFETY

SALESMAN:
 HOIST ZONE
 SALESMAN

TOLERANCES (U.N.O.):
 DIMENSIONS: ±1/8"
 ANGLES: ± 0.2°



Y:\Engineering\09 Engineering Staff\Jonathan McGurn\Sample Hoist Zone Approvals\Ultralite Base Plate Mounted Jib Crane\Free Standing Jib Crane with Base Plate - Structured.dwg
 Last Saved: 03-06-2025 @ 11:49:25 JOHN MCGURN {Sample Hoist Zone Approvals}




SHIPPING LIST							
ITEM	QTY	PART NO.	DESCRIPTION	LENGTH	UNIT WT.	NET WT.	FINISH
1	1	QUOTE-JC-WD03	BEAM WELDMENT		345.69	345.69	YELLOW, SAFETY
2	1	QUOTE-JC-WD04	CHANNEL WELDMENT		12.27	12.27	YELLOW, SAFETY
3	1	QUOTE-JC-WD02	JIB ARM		199.33	199.33	YELLOW, SAFETY
4	1	QUOTE-JC-WD01	JIB COLUMN		654.90	654.9	YELLOW, SAFETY
5	1	QUOTE-JC-AS03	BOTTOM ROLLER ASSEMBLY		54.70	54.7	YELLOW, SAFETY
6	1	-	STARKE FESTOON KIT	163 1/2 in	5.02	5.02	PURCHASED
7	1	QUOTE-JC-PL12	BLOCK STOP	2 in	1.13	1.13	UNFINISHED
8	1	QUOTE-JC-PL13	SHIM	5 3/4 in	0.49	0.49	
9	8	Anchor Bolt Type 02			7.49	59.91	
10	4	PL1019	6 X 4 END STOP	6 in	2.90	11.62	BLACK PDC
11	3	SET-90077	FESTOON BRACKET - 16 IN	16 in	1.55	4.66	BLACK PAINT
12	3	S100-SH	SINGLE BOLT STANDARD HANGER		0.40	1.2	PURCHASED
13	3	-	3/8"-16 HEX BOLT (GR. 5)	1 1/4 in	0.01	0.02	ZINC-PLATED
14	3	-	3/8"-16 NYLON LOCKING NUT (GR. 8)		0.00	0.01	YELLOW ZINC
15	4	-	1/2"-13 STRUCTURAL BOLT (A325)	1 1/2 in	0.02	0.07	BLACK OXIDE
16	4	-	1/2"-13 HEAVY HEX NUT (A563)		0.01	0.03	BLACK OXIDE
17	4	-	5/8"-11 HEX BOLT (GR. 8)	2 1/4 in	0.04	0.15	YELLOW ZINC
18	8	-	5/8"-11 STRUCTURAL BOLT (A325)	1 3/4 in	0.03	0.26	BLACK OXIDE
19	8	-	5/8"-11 HEAVY HEX NUT (A563)		0.01	0.12	BLACK OXIDE
20	4	-	5/8"-11 NYLON LOCKING NUT (GR. 8)		0.01	0.05	YELLOW ZINC
21	2	-	3/4"-10 STRUCTURAL BOLT (A325)	2 in	0.05	0.11	BLACK OXIDE
22	1	-	1/4" STANDARD - STRAIGHT GREASE ZERK		0.00	0	PURCHASED
23	1	26878-26823	ROLLER BEARING		1.19	1.19	UNFINISHED
						TOTAL WT.#	1352.92

Qty. (1) Base Plate Mounted Jib Crane
 Capacity: 1/2 Ton
 Height Under Boom: 8'-6 1/2"
 Span: 15'

JOB:
 HOIST ZONE CUSTOMER
 SAMPLE APPROVAL DRAWING
 QUOTE

DRAWING:
 JIB ASSEMBLY
 QUOTE-JC-AS01

PAINT COLOR: YELLOW, SAFETY		
SALESMAN: HOIST ZONE SALESMAN	TOLERANCES (U.N.O.): DIMENSIONS: ±1/8" ANGLES: ± 0.2°	