



OWNER'S MANUAL

Model SFT Fall Protection Beam Trolley

Models SFT100 & SFT200



Table of Contents

1.0 Safety.....	2
2.0 Assembly	3
3.0 Design Views	4
3.1 Design Dimensions	5
4.0 Parts List.....	6
Starke Products Warranty	7

1.0 Safety

1.1 Read these instructions first and then unpackage all the parts of your new trolley.

The user of this trolley must pay attention to and abide by the warnings below.

▲IMPORTANT NOTE:

1.1 **Warning:** Before use verify that the correct hardware was used and that the trolley is assembled properly per the included instructions.

1.2 **Warning:** Before use inspect the work area to make sure it is safe and clear of obstructions.

1.3 **Warning:** DO NOT modify this device or operate a damaged trolley

1.4 **Warning:** Repairs to this trolley should be performed at a qualified repair facility. Contact Starkeamerica.com to locate the nearest repair center.

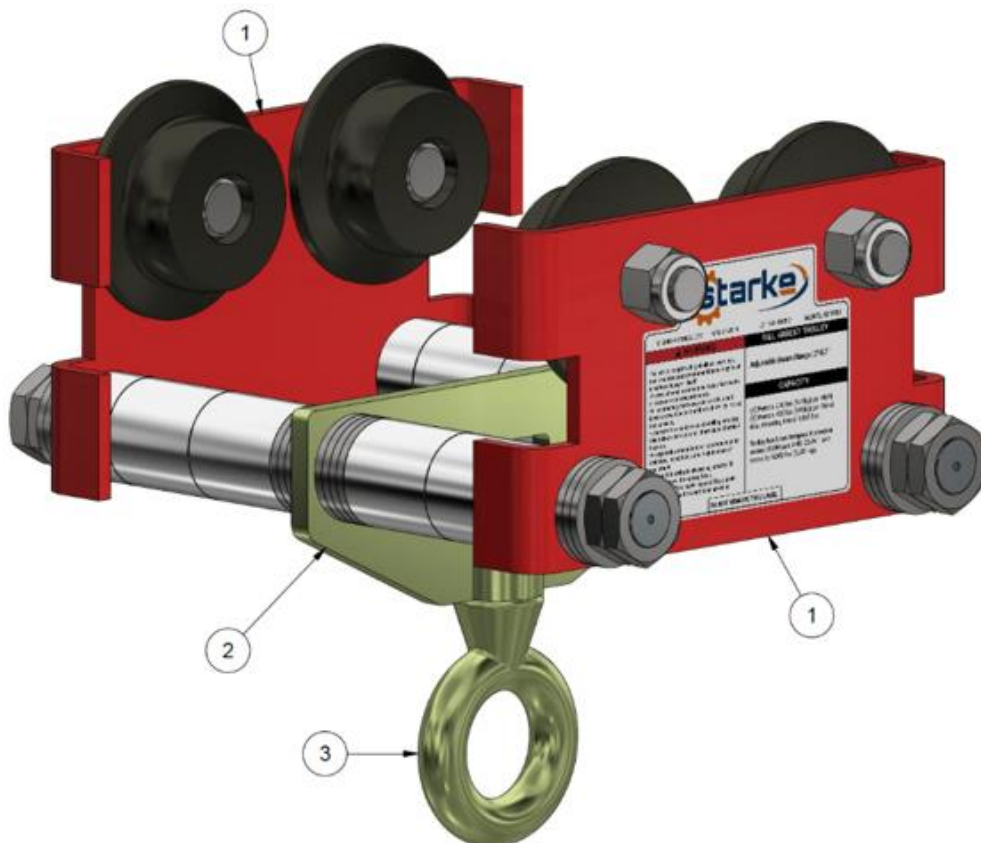
2.0 Assembly

2.1 Using picture below as a guide use the spacer washers and larger spacers provided to provide 1/8 inch clearance (+/- 1/16") between the I-Beam flange width and the flange of the trolley wheels.

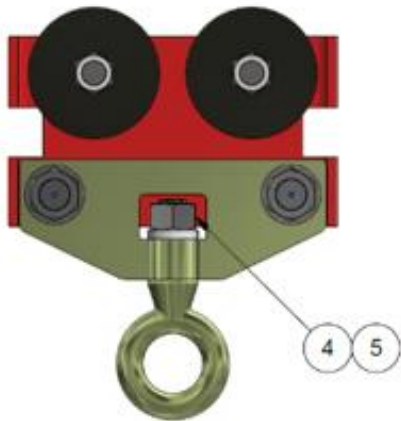
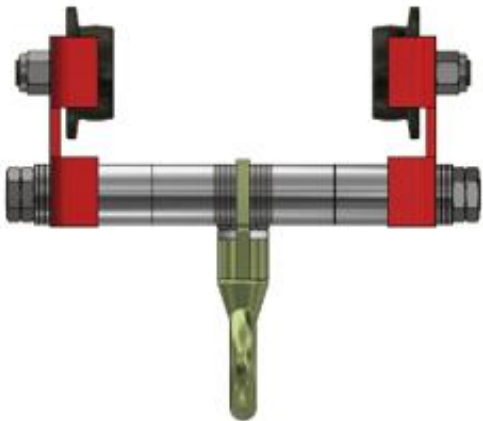
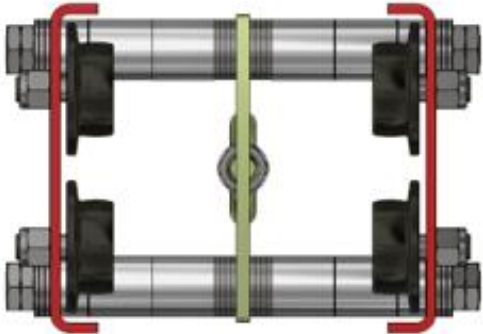
2.2 There must be no more than a 1/4" gap between the monorail/beam flange width and the trolley wheel outer flange that will rub against the beam flange.

2.3 Install any remaining spacer washers and large spacers on the shafts outside the side plates (fig 1) as shown in the picture below.

2.4 Install the nuts and jam nuts onto the threaded shafts. Lock nuts together.

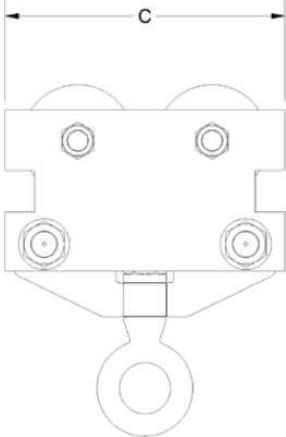
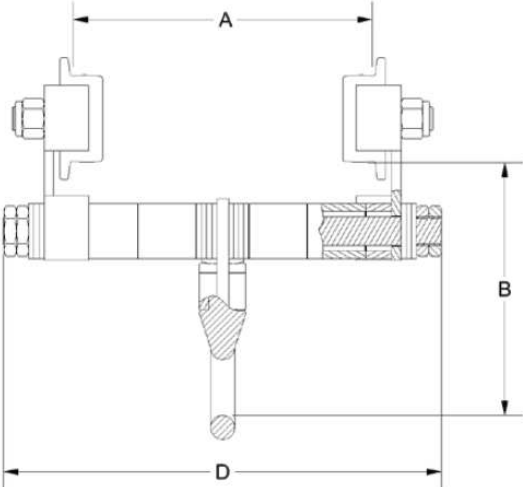


3.0 Design Views

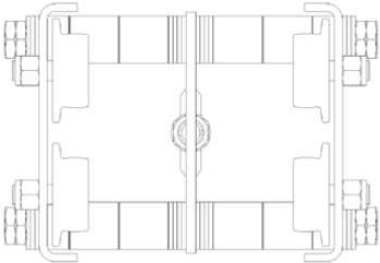


ONE SIDE REMOVED FOR CLARITY

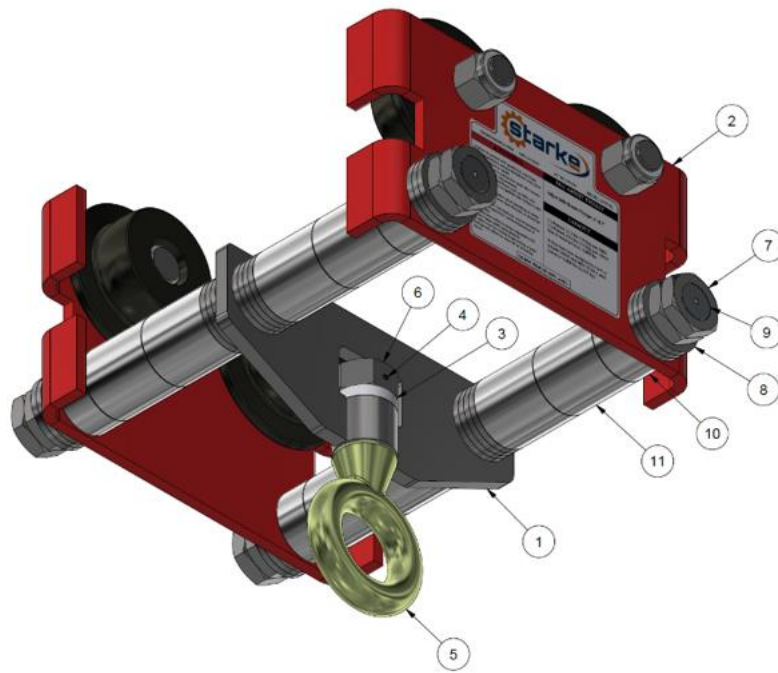
3.1 Design Dimensions



Fall Arrest Beam Trolley Dimensions				
	A	B	C	D
SFT100	3 1/2" MIN 8 5/8" MAX	6 3/4"	6 3/16"	11 7/8"
SFT200	3 1/2" MIN 8 5/8" MAX	6 3/4"	6 3/16"	11 7/8"



4.0 Parts List



Drawing No.	Description
1	5/16" Plate Swivel Weldment
2	Aluminum Side Plate Assembly
3	Plastic Washer
4	1/8" x 1" Double Roll Pin
5	3/4" x 1.5" Shoulder Eye Bolt
6	3/4" - 10 Hex Nut- Gr 8
7	M20 Jam Nut
8	M20 Flat Washer, STL
9	M20 Stud, STL
10	Spacer, Short
11	Spacer, Long



Starke Products Warranty

1 Year (12 Month) Parts & Labor Warranty

Unless otherwise specified, Starke guarantees that our products are free from material defects in design and workmanship under normal use, proper maintenance, and service.

This warranty is strictly limited to 12 months for single shift operation or 2,000 hours after installation, or 14 months after shipment, whichever is shorter. Within ten days after defect is found, warrantee must deliver a written notice to Starke providing defect information. All requested warranty information must be received promptly by Starke in no more than 5 business days.

Customer is responsible for all shipping charges on returned/warrantable items. Starke will cover the repair (parts and labor) at no charge or provide a replacement item at Starke's discretion.

This warranty does not cover defects or damage caused by acts of God, unusual wear and tear, improper use, or improper maintenance by the user. No responsibility for consequential damage is expressed or implied, and the responsibility under this warranty/guaranty is limited to the repair or replacement of the defective materials. Repair or replacement of the item is fully at the discretion of Starke.

ALL OTHER REPRESENTATIONS, EXPRESS OR IMPLIED, WARRANTY, OR LIABILITY RELATING TO THE CONDITION OR USE OF THE PRODUCT ARE SPECIFICALLY DISAVOWED, AND IN NO EVENT SHALL STARKE BE LIABLE TO BUYER, OR ANY THIRD PARTY, FOR ANY DIRECT OR INDIRECT CONSEQUENTIAL OR INCIDENTAL DAMAGES

STARKE
Starkeamerica.com/contact-us/



Contact Your Starke Representative for More Information on Products to Help Maximize Your Workplace Efficiency



Hoists & Trolleys



Crane Components



Electrification



Crane Kits



Slings



Safety