



OWNER'S MANUAL

Pendants

Single Speed

Two Speed

Variable Speed



Table of Contents

- 1.0 Important Safety Information 3
 - 1.1 Safety Precautions 3
 - 1.2 Warnings 3
 - 1.3 Safety Features 3
- 2.0 Pendant Options 4
- 3.0 Variable Speed Control 6
 - 3.1 Operation Characteristics of the Variable Speed Knob 6
- 4.0 Electrical Diagrams 7
 - 4.1 STD- Single Speed Button..... 7
 - 4.2 STD- Single Speed Button..... 8
 - 4.3 VS- 2 Speed Hoist Buttons 9
 - 4.4 VS- 2 Speed Hoist & Trolley Buttons10
- 5.0 Parts Lists11
 - 5.1 Pendant Part List11
 - 5.2 Pendant Cable Options.....11
- Starke Products Warranty12

1.0 Important Safety Information

Please read, understand, and follow all aspects of this manual before repairing or wiring the Starke pendant. Please observe and follow all safety and warning information during the operation of a crane system. Failure to do so may result in serious property damage, personal injury and/or loss of life.

1.1 Safety Precautions

Because of the heavy loads being transported by a hoist/trolley, the operator and those around the serviceable area must be attentive to and aware of all potential risks involved with the operation of the system. The operator must pay careful attention to and abide by the safety rules and warnings listed below and found throughout this manual. All Safety Rules and Warnings **must** be followed.

1.2 Warnings

- Before operation, the operator must have a clear and unobstructed view of the entire service area of the system.
- For your safety do not attach the electrical supply wires to this unit before the covers are in place and no risk of shock is possible.
- Before operation, inspect the hoist system to be sure it is in proper working condition. Check for any possible obstacles and/or personnel in the service area of the hoist system before testing your pendant control.
- While operating the hoist system, the operator must take caution to prevent a situation where the changing of direction of travel and the resulting abrupt force may cause the load to swing. This may cause an overload of the trolley and/or hoist and loss of the load.
- Do not modify the pendant in any way or operate the pendant with damaged parts or exposed electrical connections. Any attempt to do so will put you, others, and property at serious risk.
- Repairs to this unit must be performed by a qualified person. Contact Starke America to locate the nearest repair facility. See warranty information at the end of this manual.

1.3 Safety Features

Starke control pendants are all equipped with an emergency stop (Estop) button that is a manual reset type. This is to immediately stop all functions of the hoist system in the event of an emergency, it can also be used to protect the hoist system from unintentional activation.

2.0 Pendant Options

2.1 Pendant Types

Pendant options include single speed momentary, 2 speed momentary, variable speed control with 2 speed buttons.

- In a fixed position installation of a hoist, a 1-motion pendant would be required.
- If a hoist and motorized trolley is specified, then a 2-motion pendant would be required.
- If a hoist, motorized trolley, and motorized bridge are specified then a 3-motion pendant is required.
- Another option is a wireless radio control system that can be customized to your application by your Starke America dealer.



**2 Button, Variable
Speed Pendant**
(S2BVSP)
Pre-2024



**6 Button, 2 Speed
Pendant**
(S6B2SP)



**2 Button, Variable
Speed Pendant**
(S2BVSPD*)
*D designates 2024-

2.2 Complete Pendant Part Numbers

SKU	Motion	Speed	Type	Net Weight
S2B1SP	1 Motion	1 Speed	w/ E Stop	.73 lbs
S2B2SP	1 Motion	2 Speed	w/ E Stop	.94 lbs
S2BVSP	1 Motion	Variable (pre-2024)	w/ E Stop	1.35 lbs
S2BVSPD	1 Motion	Variable (after Jan 24)	w/ E Stop	1.35 lbs
S4B1SP	2 Motion	1 Speed	w/ E Stop	1.82 lbs
S4BVSP	2 Motion	2 Speed/VS (pre-2024)	w/ E Stop	1.96 lbs
S4BVSPD	2 Motion	2sp&VS (after Jan 24)	w/ E Stop	1.96 lbs
S4B2SP	2 Motion	2 Speed	w/ E Stop	1.82 lbs
S6B2SP	3 Motion	2 Speed	w/ E Stop	2.34 lbs



3.0 Variable Speed Control

3.1 Operation Characteristics of the Variable Speed Knob

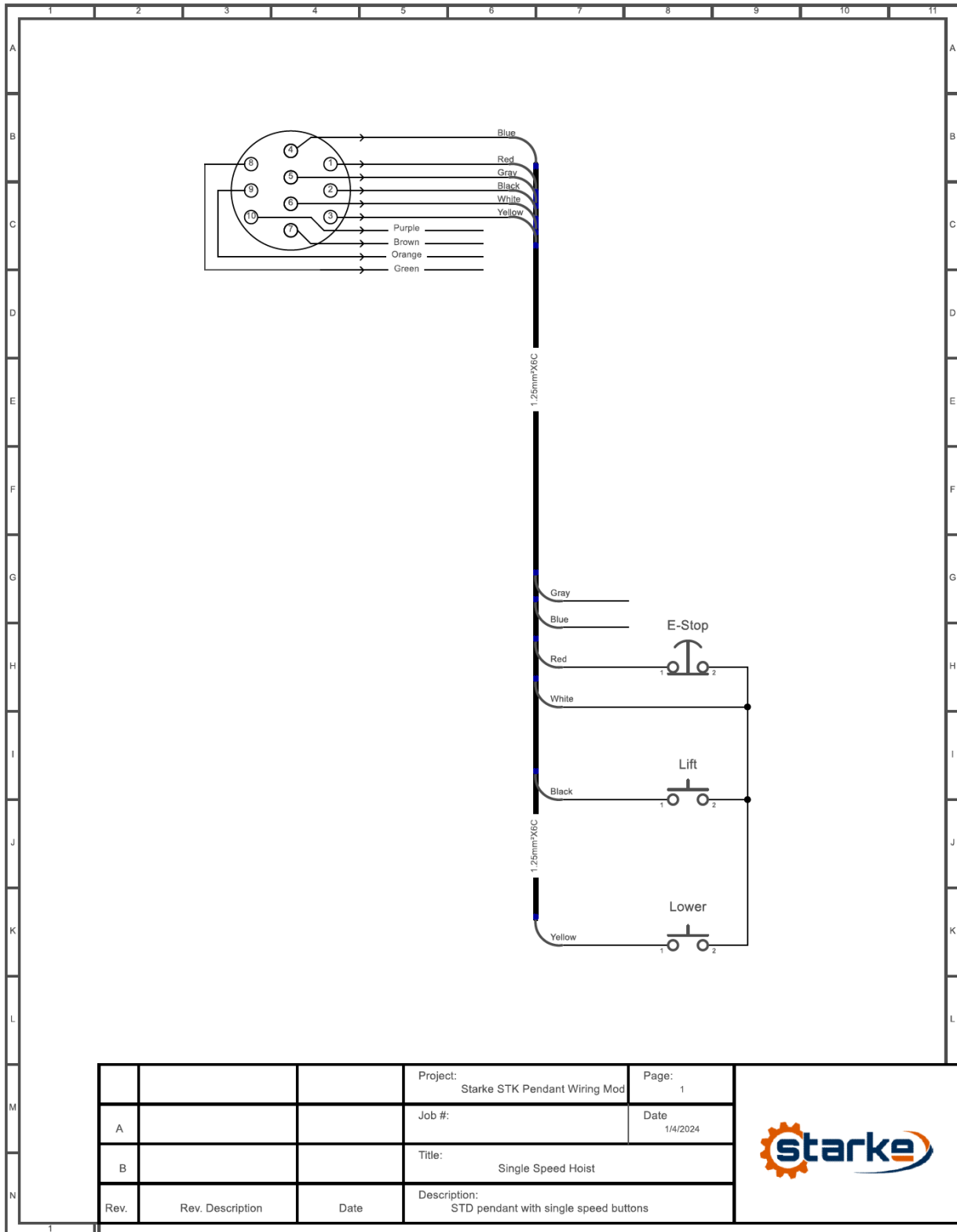
The variable speed dial allows the operator to select the hoist chain lift/lower speed on the go or when not in use. By rotating the dial counterclockwise, you can reduce the speed of the hoist chain between the minimum and maximum speeds the hoist is capable of. By rotating the dial clockwise, you can increase the speed of the hoist chain between the minimum and maximum speeds the hoist is capable of.

There are 2 ways you can adjust the speed. Basically, any time you adjust the dial with no buttons pushed you would be setting the speed for the next time you push an up or down button. Or you can adjust the dial and change speed while the hook is being lowered or raised.

For multiple motions of a crane system to be controlled with the variable speed option you would need to use a remote radio system with variable speed capability. With a variable speed remote radio system, you can apply the variable speed option to lift motion, trolley travel, and bridge crane travel.

4.0 Electrical Diagrams

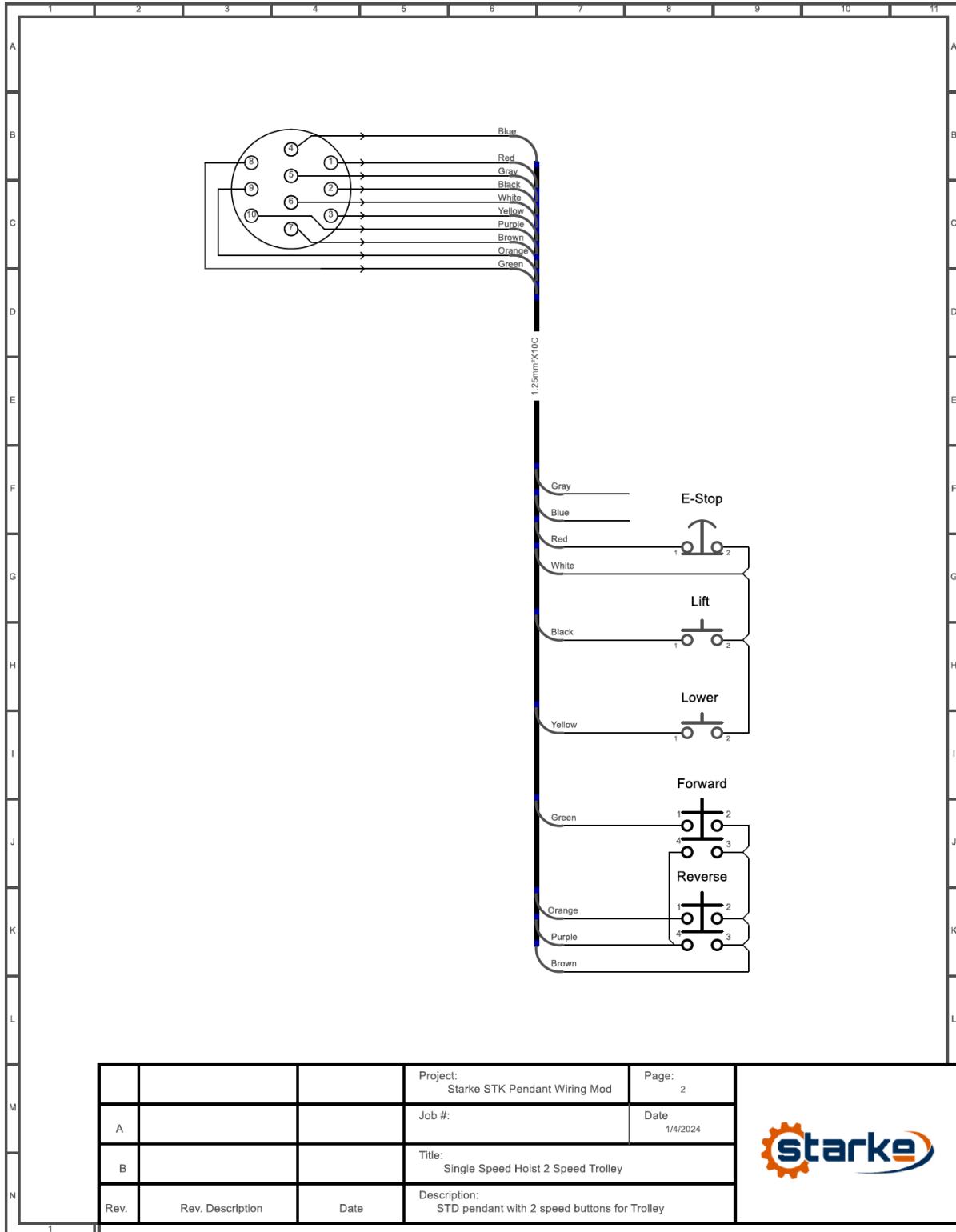
4.1 STD- Single Speed Button



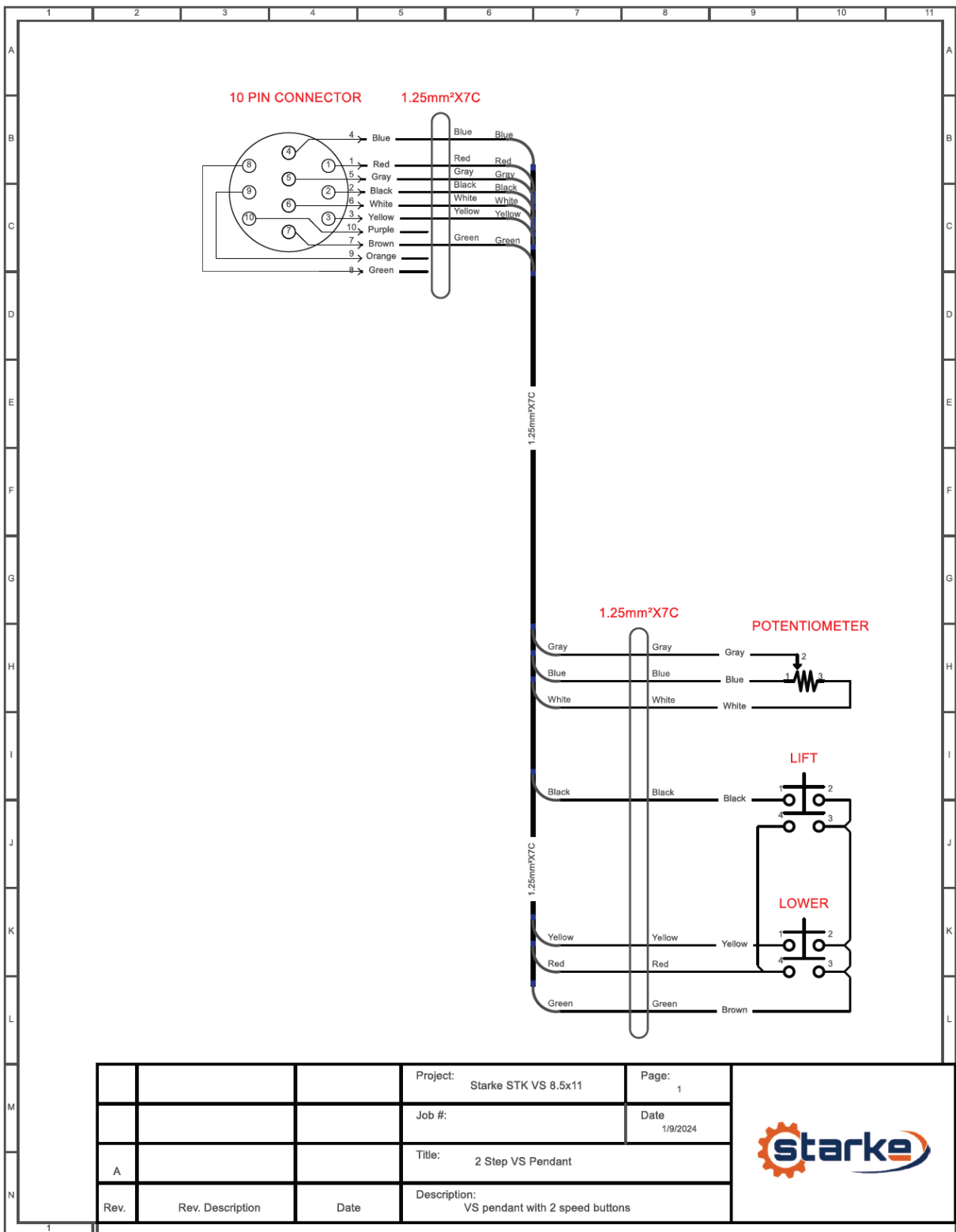
			Project: Starke STK Pendant Wiring Mod	Page: 1
A			Job #:	Date 1/4/2024
B			Title: Single Speed Hoist	
Rev.	Rev. Description	Date	Description: STD pendant with single speed buttons	



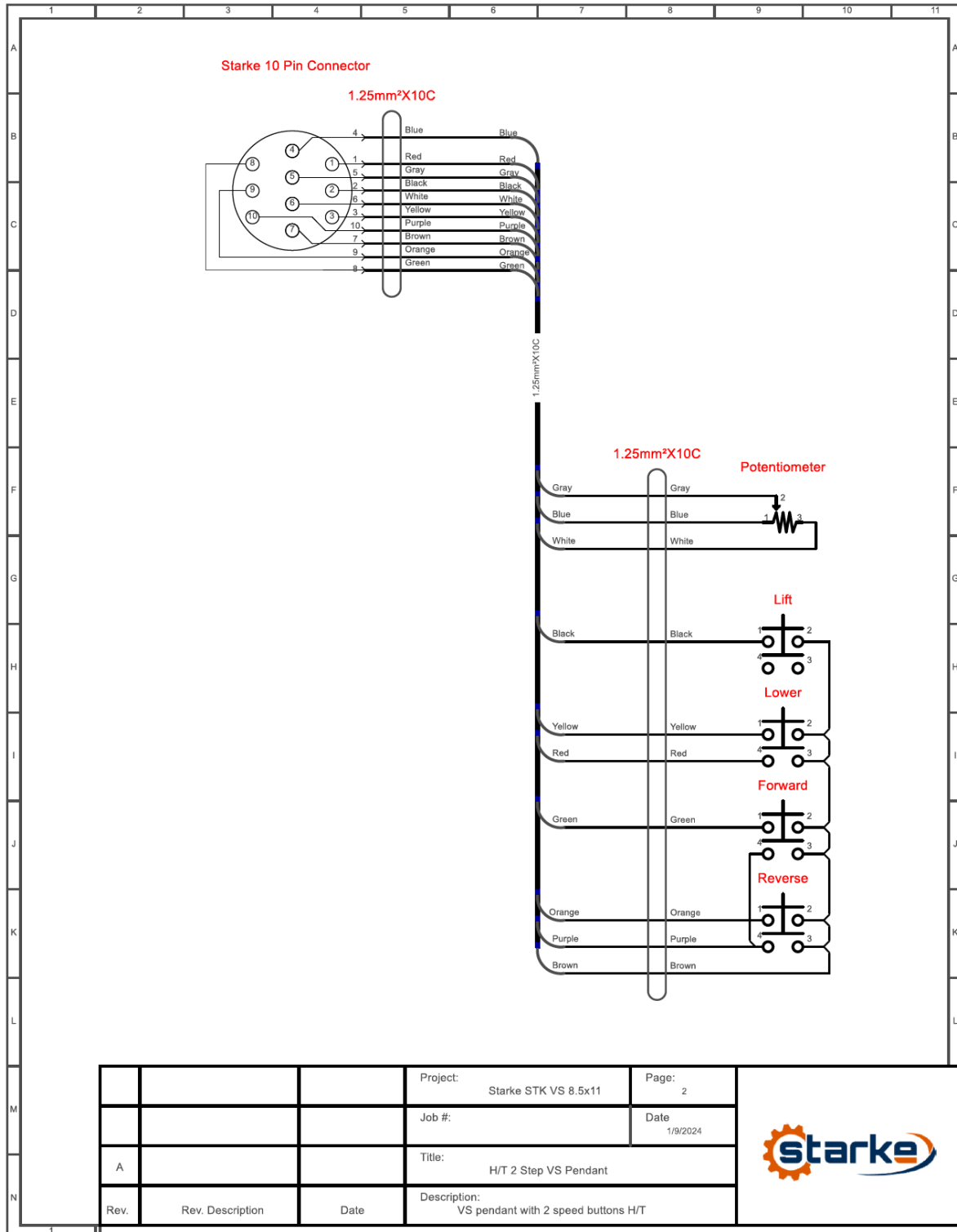
4.2 STD- Single Speed Button



4.3 VS- 2 Speed Hoist Buttons



4.4 VS- 2 Speed Hoist & Trolley Buttons



5.0 Parts Lists

5.1 Pendant Part List

Item	Description	Part Number
1	Single speed button switch w/ button cover	600-60020
2	2 speed button switch w/ button cover	600-60021
3	E-Stop switch with button	600-60022
4	ON -Switch with Button Cover	600-60023
5	Button Cover only- ON	600-60028
6	Button Cover only- Single Speed	600-60029
7	Button Cover only- 2 Speed	600-60030
8	Pendant Cable Gland- Rubber	600-60035
9	10 Pin Aviation Plug- Pendant cord end	600-60061
10	10 Pin Aviation Plug- Hoist/Trolley Body Mount	600-60060
11	Potentiometer knob- Silver (late)	600-60004
12	Potentiometer knob- Black (early)	600-60005

5.2 Pendant Cable Options

SKU	Length	# of Wires	Net Weight
SPCE06-1	Per Foot	6	.15 lb
SPCE06-50	50'	6	7.5 lb
SPCE06-100	100'	6	15 lb
SPCE06-250	250'	6	37.5 lb
SPCE10-1	Per Foot	10	.24 lb
SPCE10-50	50'	10	12 lb
SPCE10-100	100'	10	24 lb
SPCE10-250	250'	10	60 lb

Visit StarkeAmerica.com for parts availability & price requests via the “Contact Us” button.



Starke Products Warranty

1 Year (12 Month) Parts & Labor Warranty

Unless otherwise specified, Starke guarantees that our products are free from material defects in design and workmanship under normal use, proper maintenance, and service.

This warranty is strictly limited to 12 months for single shift operation or 2,000 hours after installation, or 14 months after shipment, whichever is shorter. Within ten days after defect is found, warrantee must deliver a written notice to Starke providing defect information. All requested warranty information must be received promptly by Starke in no more than 5 business days.

Customer is responsible for all shipping charges on returned/warrantable items. Starke will cover the repair (parts and labor) at no charge or provide a replacement item at Starke's discretion.

This warranty does not cover defects or damage caused by acts of God, unusual wear and tear, improper use, or improper maintenance by the user. No responsibility for consequential damage is expressed or implied, and the responsibility under this warranty/guaranty is limited to the repair or replacement of the defective materials. Repair or replacement of the item is fully at the discretion of Starke.

ALL OTHER REPRESENTATIONS, EXPRESS OR IMPLIED, WARRANTY, OR LIABILITY RELATING TO THE CONDITION OR USE OF THE PRODUCT ARE SPECIFICALLY DISAVOWED, AND IN NO EVENT SHALL STARKE BE LIABLE TO BUYER, OR ANY THIRD PARTY, FOR ANY DIRECT OR INDIRECT CONSEQUENTIAL OR INCIDENTAL DAMAGES

STARKE

Starkeamerica.com/contact-us/



Contact Your Starke Representative for More Information on Products to Help Maximize Your Workplace Efficiency



Hoists & Trolleys

Crane Components



Electrification

Crane Kits



Slings



Safety