

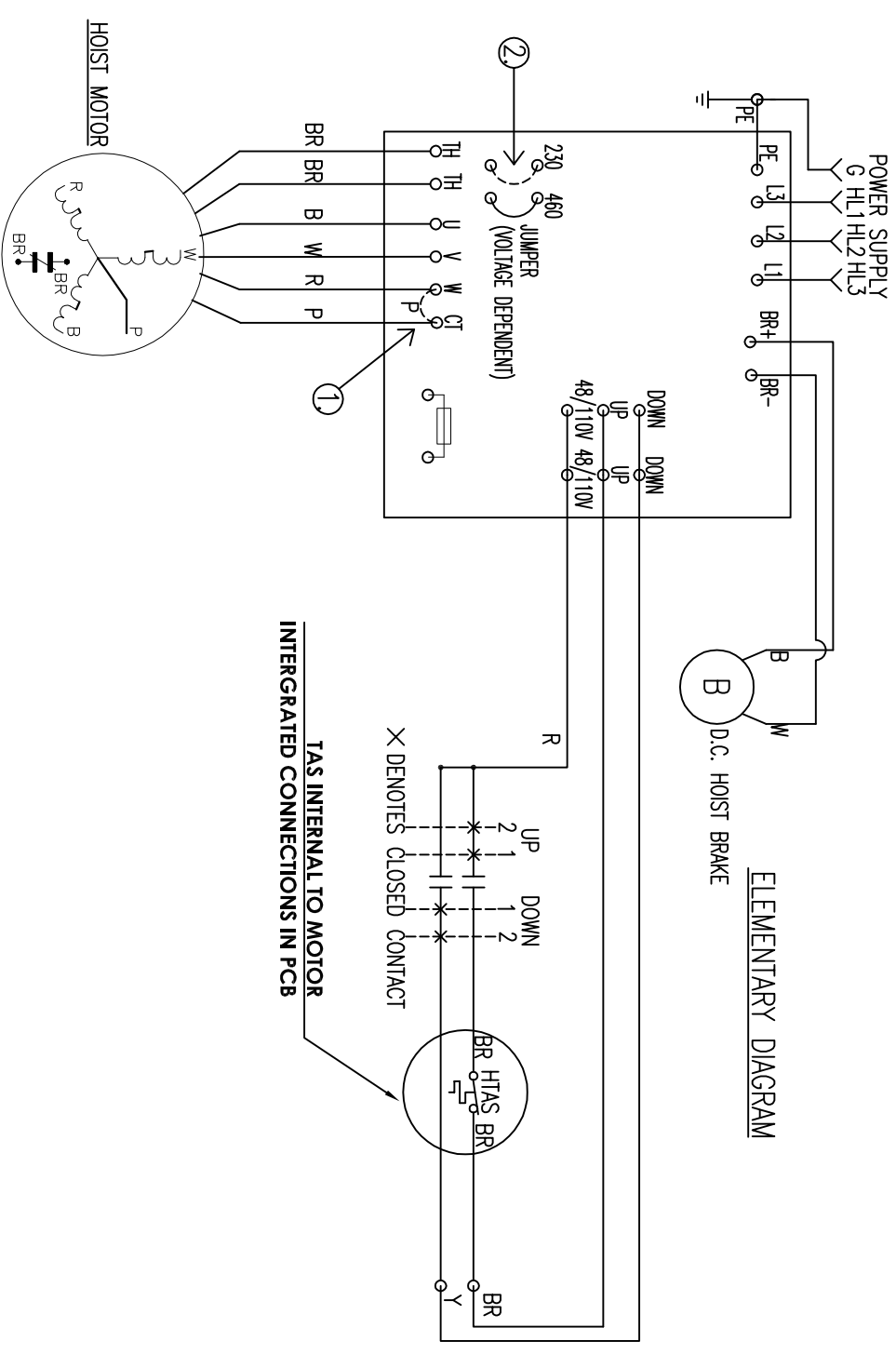
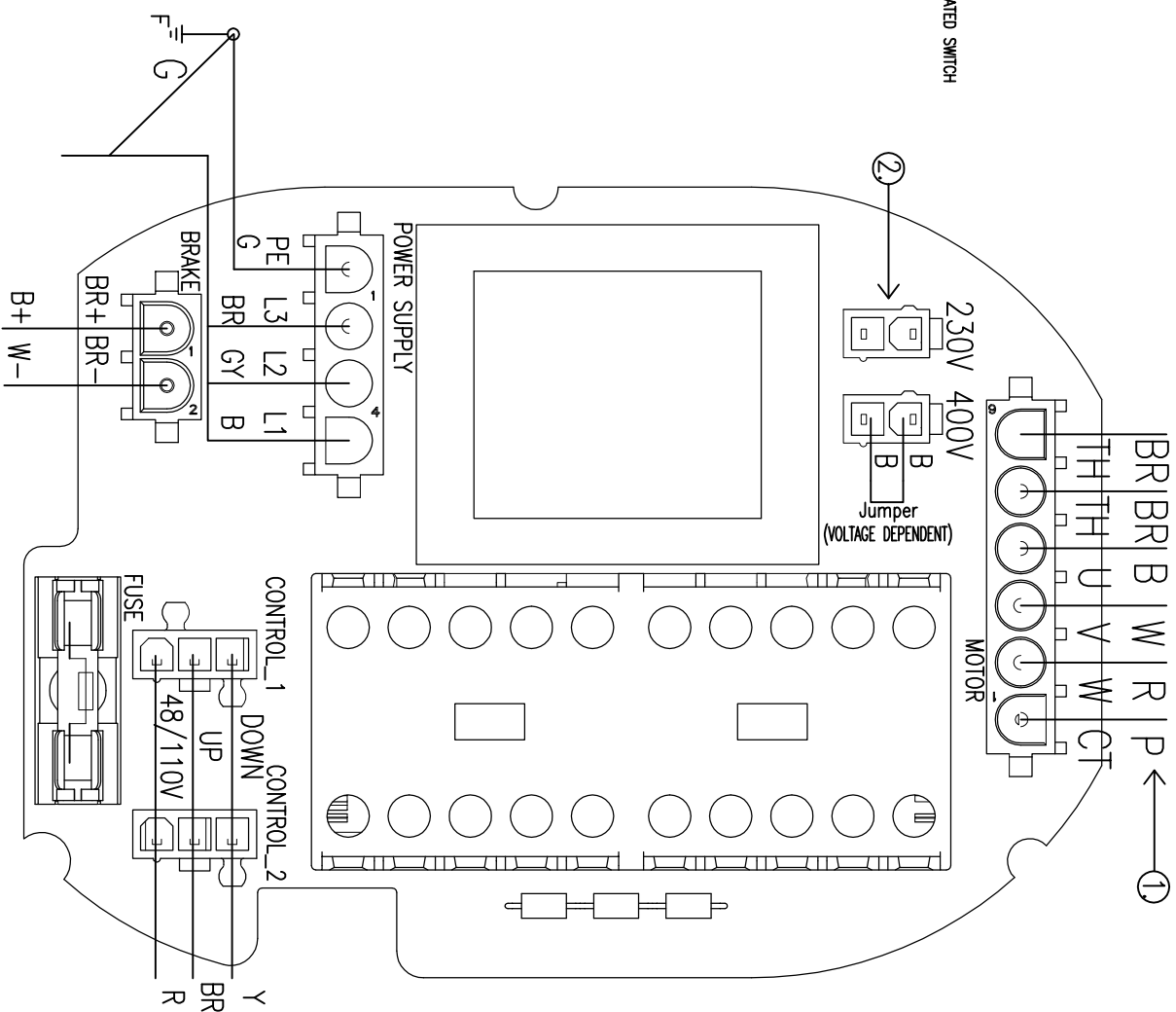
WIRE #	DEVICE CONNECTED
TH	THERMAL PROTECTOR
U	MOTOR LEAD
W	MOTOR LEAD
CT	MOTOR LEAD
PE	GROUND
L1	POWER LEAD 1
L2	POWER LEAD 2
L3	POWER POS. LEAD
BR+	BRAKE NEG. LEAD
BR-	BRAKE POS. LEAD
B	BLACK LEAD
R	RED LEAD
W	WHITE LEAD
G	GREEN LEAD/GROUND
BR	BROWN LEAD
Y	YELLOW LEAD
P	PURPLE LEAD

SYMBOL DESIGNATIONS
 HTAS - HOIST MOTOR TEMPERATURE ACTUATED SWITCH

G - FRAME GROUND

THERMAL CUT-OUT OR TAs

FUSE
 CONNECTOR
 TERMINAL



TAS INTERNAL TO MOTOR
 INTEGRATED CONNECTIONS IN PCB

ELEMENTARY DIAGRAM

NOTES:

- ① PURPLE LEAD COMES FROM MOTOR ON 400V CONFIGURATION AND IS JUMPED WITH RED LEAD ON 230V CONFIGURATION.
- ② JUMPER TO BE INSTALLED FOR VOLTAGE SELECTED. OTHER JUMPER SPACE WILL BE CAPPED OR FILLED TO PREVENT INCORRECT WIRING.

▲WARNING:
 UNLESS HOOK RAISES WHEN "UP" PUSHBUTTON IS PRESSED, SEVERE HOIST DAMAGE AND A DROPPED MAY OCCUR.

CORRECT IMPROPER HOOK DIRECTION BY INTER-CHANGING MOTOR INPUT POWER LEADS T1 AND T2. DO NOT CHANGE PUSHBUTTON WIRING.

▲WARNING:
 THIS EQUIPMENT MUST BE EFFECTIVELY GROUNDED ACCORDING TO APPLICABLE CODES.

▲AVERTISSEMENT:
 CET EQUIPEMENT DOIT ETRE MIS A LA TERRE EN ACCORDANCE AVEC LES NORMES EN VIGUEUR.

151502	AA	ADOPT	6/23/2017	MRLDM	Drawn:	5/10/2017	MRLDM
-	-	-	-	-	Approved:	5/10/2017	MRLDM
ECN	Rev.	Description of change	Date	By	Original Scale:	1:1	

COLUMBUS MCKINNON CORPORATION
 Columbus McKinnon Corporation
 Hoist & Rigging - Americas
 Amherst, NY USA

WIRING DIAGRAM, PCB, SS/PS

B Number: **192042871** Sheet **1/1**